



2007-2008



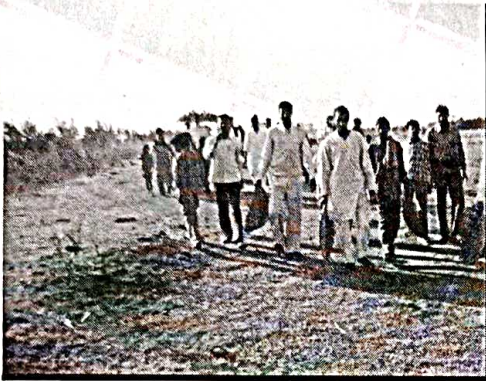
Rashtriya Jharkhand Seva Sansthan

Website : [www.rjssjharkhand.com](http://www.rjssjharkhand.com)

Annual Report

# Annual Report

2007-2008



Rashtriya Jharkhand Seva Sansthan  
E-mail: [rjss@rediffmail.com](mailto:rjss@rediffmail.com)

## CONTENTS

- **About the organisation**
  - Vision, Mission
- **Area of Operation**
- **Organisational Structure**
- **Ashram**
- **Education**
  - Against child labour and schooling for orphans.
- **Health**
  - Community Mental Health Programme
  - Disability
  - Eye check up camp
  - Sanitation
- **Socio-Economic Status**
  - Leaf Plates Production
- **Women Empowerment**
  - Self Help Group
  - Women Day
  - Leadership training
- **Training**
  - Vocational training
  - Agriculture training
- **Advocacy & Lobbying**
  - Lok Samiti
- **Environment**
  - Wasteland Development by plantation
  - Formation of Gram Van Suraksha Samity and Street play programme with forest department
- **Lighting**
  - Solar Lamp distribution

## ① OUR ACKNOWLEDGMENT ①

The Annual Report for the year 2007-2008 is blueprint of our work for the poor community. Working towards our vision for the attainment of a self-reliant, self-sustaining and discrimination free society has crossed 14 long years since its inception in 1995. All our thinking and activities during the year remained directed towards these objectives only. Rashtriya Jharkhand Seva Sansthan with all its projects/ programs and resources remained vigilant and vibrant and has created sustainable impact on the community it worked for.

Adopt a village program, livelihood initiative and Dalma Bachao Andolan have become an engine of development motivation and action in RJSS area of operation. Among projects implemented last year, the key programs and its growth are worth mentioning here. The Basic Needs- Community mental health programme under the network of N.B.J.K. Hazaribagh , UNICEF & PHED Sanitation program ,Solar lantern distribution by Forest department Koderma and Jareda ,Organizing Gram Adalat for the villagers and training programme of sewing and cutting for the women and girls are some of the major programs of the organization which has great promise for poor community.

We are truly thankful to our partners: Basic Needs ,UNICEF,PHED Koderma, Department of Forest-Koderma & West Singbhum(GOI), Jharkhand Renewable Energy Development Authority-Jharkhand, Nav Bharat Jagriti Kendra and General secretary Obatelpers International(USA) and Ms. Oote (Uk).

We are also very grateful to our members, staffs, officers, field supervisors, volunteers, SHG members, Community members, friends and all other well wishers for their good wishes, love and cooperation.

RJSS looks upon total development as the only tool for becoming sustainable organization. As a responsible grass root NGO, RJSS keeps on evaluating itself to ensure that it remains on tune to all development happenings. This is a process that is so vital for the organization's growth and development.

**Manoj Kumar Dangi**

Secretary

## ① ABOUT THE ORGANISATION ②

### BACKGROUND

Mr. Manoj Kumar and Vijay Kumar dedicated their life for the upliftment of Society from their college life. The two young college student from remote village could not see the injustice, atrocities, disparity and unethical values widely prevailed in the society. They were influenced by the thought of Lok Nayak Jai Prakash and Lohia .During their studies they formed an organisation Rashtriya Jharkhand Seva Sansthan(RJSS) on 2<sup>nd</sup> Oct 1995 with the help of their two friends Mr. Ram Nandan Prasad and Mr. Birendra Kumar with a vision to make a model society where injustice disparity atrocities have no place. Their endeavour to create a conducive environment for socially balanced society is established from their little effort of regular intervention in the area with dedication and determination of change in mind

### VISION

Establish a socio equal discrimination free society, a prosperous country where farmers, women have their equal right.

### MISSION

To work with the poor & marginalized people, to eradicate poverty, unemployment by overcoming in justice & inequality that causes it .

### LEGAL STATUS OF THE ORGANIZATION

The organization is registered under Indian Trust Act 1882, it has FCRA, PAN, 80 G, 12 A.

## ① AREA OF OPERATION ②

RJSS has following locations for its operations:

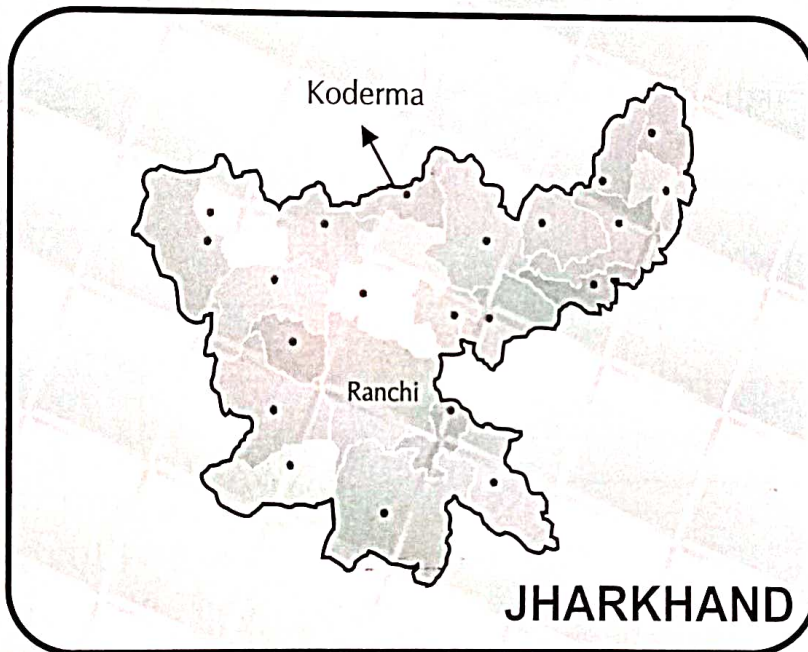
- (a) **Registered Office:** Organization has its registered office at vill. Sihas, Post-Satgawan, Dist Koderma, Jharkhand

**Correspondence Address:**

Rashtriya Jharkhand Seva Sansthan At-Bhakhra (pahalwan Ashram), Post-Satgawan, Dist-Koderma (Jharkhand)

Pin-805132, Mobile-(+ 91) 9939298583, 9430074285, 9430122964

E-mail: [rjss@rediffmail.com](mailto:rjss@rediffmail.com)



- (b) **Central office**

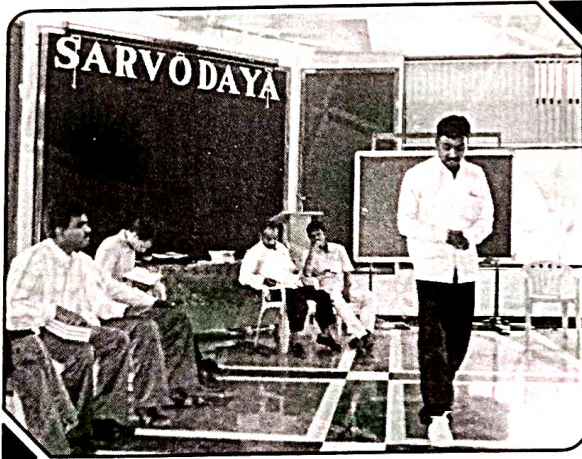
**Koderma :** Pahalwan Ashram Bhakhara, Satgawan, Koderma .

- (c) **Project Offices at :** Satgawan, Jaynagar, Markachcho of Koderma District. Mango and Patamda of East Singbhum District.

## INFRASTRUCTURE

- Furnished office of three rooms on rent basis at Sihas, Po-Satgawan Dist-Koderma.
- 4 wheeler-Jeep
- Two Motor Cycle and 10 Bicycle
- Organazation has an Ashram having one acre land and a building consisting of four rooms, Office Cum Two Training hall, the orphanage centre runs their.
- One computer with printer and scanner
- One Laptop
- One Still Camera and one Digital Camera.
- 3 Steel Almirah and Furniture.
- Three pattal plate making machine.
- 5 sewing machine .

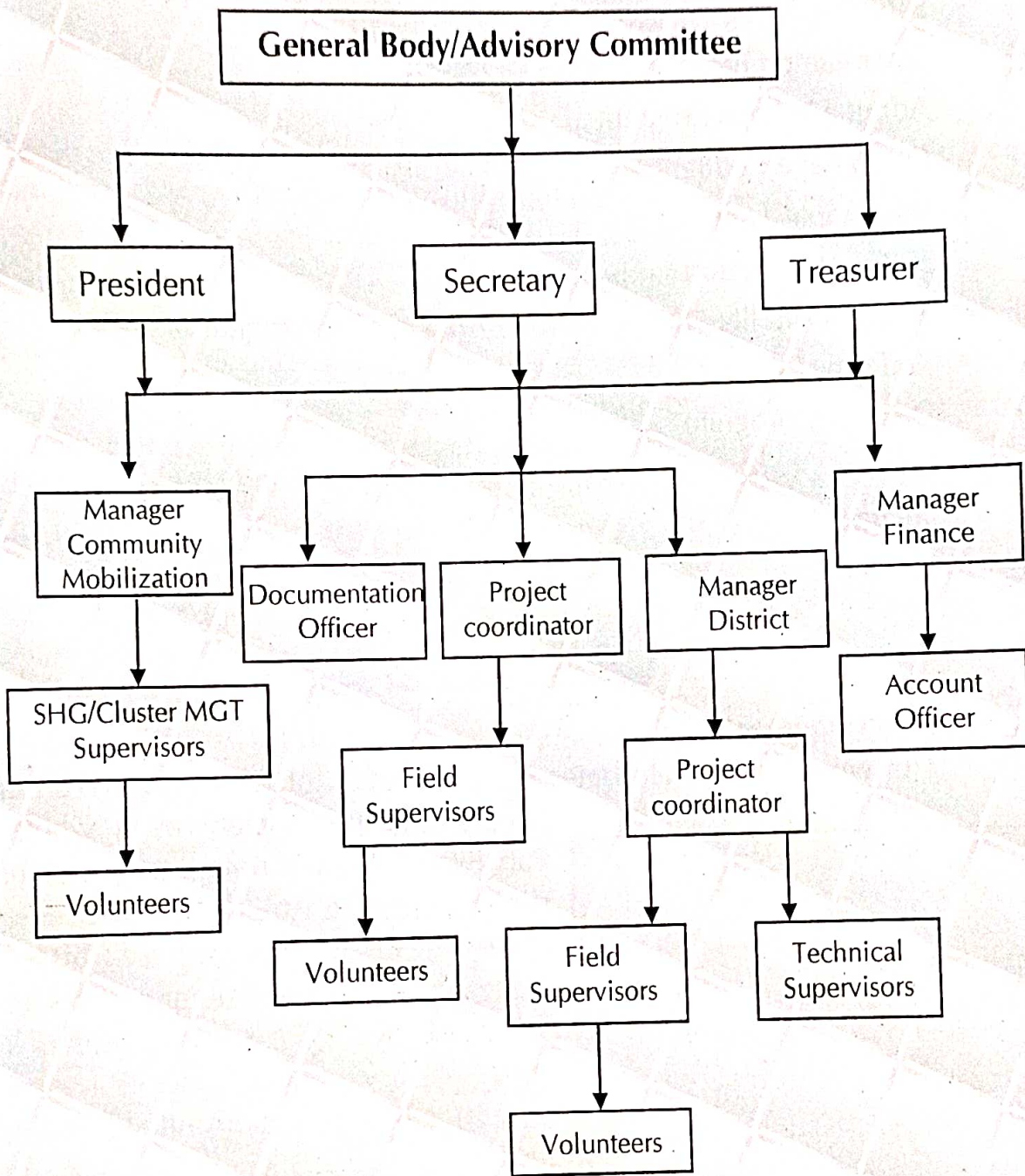
## HUMAN RESOURCES



Rashtriya Jharkhand Seva Sansthan is a team of 61 dynamic and committed individuals devoted volunteers and professionals. The organisation is run by our intellectual, skilled and professional work force.

The management personal from reputed institutions, Rural development professionals, specialized consultants are our strength to run the organisation smooth

# ❶ ORGANISATIONAL STRUCTURE ❷



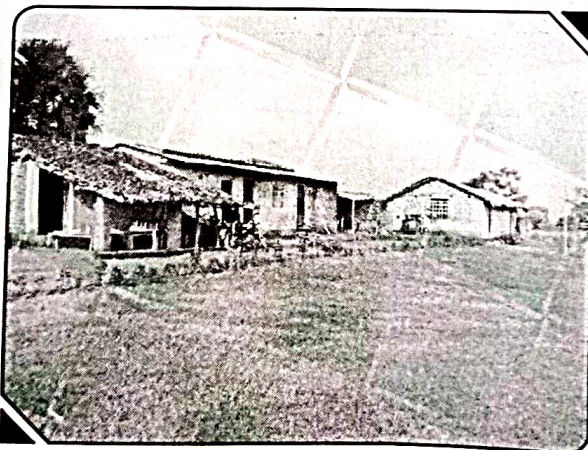


## OUR PROJECTS AND PROGRAM

- ▶ Community Mental Health Program supported by Basic Needs, Bangalore under network partner of NBJK
- ▶ Sanitation Program Prakalp with UNICEF
- ▶ Solar Lamp Distribution Forest Department
- ▶ Adopt a Village Program
- ▶ Orphanage Centre
- ▶ Vocational Training
- ▶ SHG Mobilization
- ▶ Saving Wild life "Dalma Bachao Abhiyan Department of Forest Koderma
- ▶ Disability program
- ▶ Blanket Distribution Among Birhor Community and other poor villagers
- ▶ Eye Camp

## ASHRAM

### A hub of development work



The word Ashram attributes the place of Saint who enlightens the people and the society as a whole. Pahalwan Ashram is different as no saint sits here but is very much alike in a sense of working for the same purpose. This is a place where dedicated people works for the cause and care of the society. It enlightens the people towards finding new livelihood opportunity, doing justice by organizing lok adalat. The Ashram is established with a view to provide a wave of happiness in the face

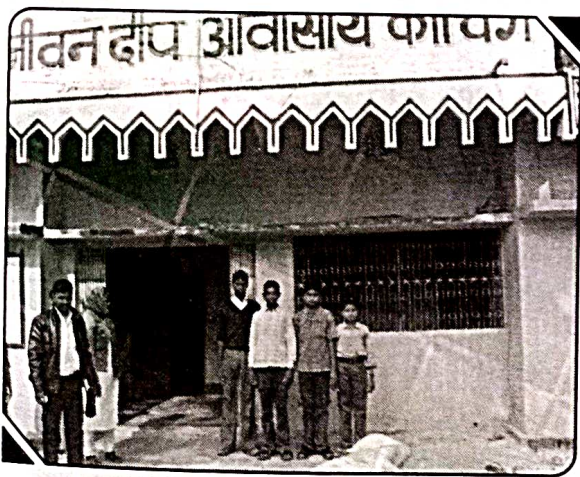
of villagers. It is a Central place where planning for the villagers are made to lead a pleasure life. This is a centre of training for different socio economic trades such as Craftsmanship, vermin compost, leaf plate, embroidery and tailoring for youths and working women.

A production unit of leaf plate is in the premises of Ashram. This is a centre to guide and to perform counselling for school going boys and girls, a centre of guidance for unemployed youth for taking higher education. A Village court is an unique concept which also runs from this place where the conflict of the villagers are resolved.

## ❶ EDUCATION ❷

The Jharkhand state has witnessed low literacy rate and the children from poor families are worst sufferer. The poor parents forced the children of 6 to 14 years of age group to earn their livelihood in small hotels, Brick kiln work, Grocery Shop. Thus the children are neglected even getting basic education. The organization have mandate on educating the poor children through its various programs of government and by their own sources. The Serva Shiksha Abhiyan's project Bridge course centre and AIE centres for drop out and not school going children have largely helped the satgawan block of Koderm district in building environment of education. The organization maintained the pace of education prevailed in the area through community intervention and responsibility given to Self help group which has presence in almost all the villages of the block. The consecutive three boarding school by SSA has entirely changed the mindset of poor, forest living family towards the importance of girl education. The organization has tried to make some families understand the importance of education where taking education for girl was really a matter of laugh.

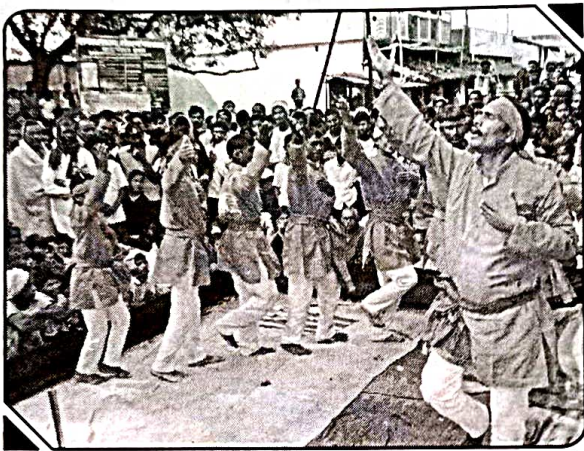
### Schooling for orphans



The world is a big place but is smallest for those who have no one to interact, share their pains. Orphans are easily exploited at brick kiln, hotels and in the houses of rich people. They are mostly involved as domestic child labourers. The exploitation of children is very high and the orphans are the worst sufferer among them. The Rashtriya Jharkhand Seva Sansthan always visualised the orphans to lead a

normal life that's why the organisation has adopted seven orphans and given permanent shelter at Ashram premises, supported their education with the help of community contribution. There are two boys who comes from Birhor community are being promoted into Jiwan Deep School Tilaiya for Sainik School entrance examination preparation, two orphans are enrolled in a college at Patna and others are enjoying their life with regular education in Pahalwan Ashram. Working for the orphans since a long time has experienced the essentials of orphans need and developed association for orphans and working for the orphans become mandate of the organization. In future we planned to open a residential school of orphans in our area.

### HEALTH



Maternal and child health care especially safe motherhood services are an important factor in the primary health care. Consolidating and strengthening health network and quality of primary health care is one of the priority issues of the state and the health department for providing good health care and protection to the population.

Since, long government health facilities, in spite of being the main source of health care services for majority of people, especially for those having low income; has very poor condition. Therefore, it's important to improve the quality of services in the government facility. National rural health mission (NRHM) is a beautiful program of the government but unaware villagers hardly takes benefits of the government schemes thus the awareness building is an important tool for getting benefits of any services.

RJSS has closely worked for maternal and child health under RCH program of Packard foundation-NBJK

The organization organized number of street plays at different places in Satgawan Block of koderme district.

Getting benefits of health services of Government schemes was achieved by regular intervention with the community. The awareness generation program through different means like street play always gives a fruitful result in getting effective implementation of the program. It empowered the community to demand their services by their own. Our street

play program did the same thing and the people started demanding their rights of health from the government.

### Eye Check up camp:-

Eye is most sensitive part of our body and ignoring its care sometimes into blindness. Cataract is most common problems in old age. In rural area lack of doctors causes problem. The organization has been organizing regular eye camps since last four years for the common people at fixed dates in different places of Satgawan block.

This year(2007-08), 4 eye camps were organized ,there were 89 patients got treatment. 12 elderly were identified as cataract patient and were operated with the help of Ramkrishna Mission Kolkata.

### Community mental health program



The organization has been implementing the mental health programme since last 5 years under a network project of Nav Bharat Jagriti Kendra(N.B.J.K.) Hazaribagh supported by Basic Needs Bangalore. The program is boon for the mentally ill patients and for their families. There are number of cases where the families of the patient had left the hope of their treatment patient due to, improper medical services, poor

condition of the family and some times due to social stigma of understanding that this is the punishment by God for their evil deeds

The mentally disabled persons are identified and free treatment is been provided under this programme . This year (2007-08) 149 patients had been identified all the 149 patients gone under specialized doctors treatment Among them 105 were treated and leading a healthy and normal life. 33 patients among 105 has been linked with various livelihood activities. 44 patients are still continuing their regular treatment.

The major challenge under this program is to convince the members of the family to send the patient under treatment and to carry the mentally ill patients to the destination hospital. The patients are some times very harsh and even harm the attendants .The organization has four trained worker to cooperate the mentally ill patients . The organization organize street plays in the villages to get the support of the community in identifying , getting cooperation of the patients family and support to send them into regular treatment . The street play and wall writing is very effective in motivating the

families and in nurturing conducive environment towards treatment and in creating respect for the mentally ill patients in leading respectful life in the villages.

### Disability

The organization has been working for the weakest segment of the society especially for disabled. The disabled have not yet got their due status in our state Jharkhand. The R.J.S.S. along with other voluntary organization has formed a network for the disabled namely "Jharkhand Viklang Vikas Abhiyan" (JVVA) on 20th April 2003 with the help of SABLA to help the disabled in the state. The network's 44 partners oversees the immediate implementation of P.W.D. act in the state. The organization has been organizing Dharnas, Rallies and Signature Campaign at different district and state level under the banner of Jharkhand viklang Vikas Abhiyan for the above purpose. The organization has performed base line survey and identified the disabled in Koderma district. Making a platform to lead a respectful life for the disabled has always been the prime agenda of the network and the RJSS. The organization helped the disabled in getting the certificates provided by the government so that the benefits of the Government for disabled could easily be availed.

Two disabled person as Jharkhand state representative were given training at T.R.C under the guideline of District Collector Mr. Nitin Madan Kulkarni. The network has crossed a landmark achievement when it got success in helping 5 disable persons getting employment in private company with the help of government officials and with the help of community members.



### Sanitation

Sanitation program of UNICEF and PHED aimed to avoid open defecation and to provide hygienic environment for the poor families in the rural area. Implementing Sanitation program through making latrines in the villages is quite difficult as the villagers are used to use open place for the purpose. The low cost latrines program by UNICEF and PHED was implemented

by RJSS in Markachö and Satgawan block of Koderma district. The project was only for the BPL families. There were 20 villages covered under this program in which 600 low cost latrines were build 553 latrines were build in Satgawan block itself and 47 in Markachö block

## ❶ SOCIO ECONOMIC STATUS :- ❷

Jharkhand is richest state of the country in mineral resources. Agriculture is the main source of livelihood, which is virtually rain fed. Due to high variability of monsoon rains even during the years of annual rainfall sometimes farmers are forced of total crop failure. Low productivity of agriculture, one-dimensional nature of the farm economy and absence of non-farm livelihood options make food security and subsistence the primary concern of farmers. The State produces barely half of its food grains requirement.

Subsidiary farm-based activities like dairy, poultry, etc have not developed in the State in spite of increasing demand for the products.

Clearly, then, there is much scope to enhance food and livelihood security and reduce poverty in the State through improved management of rural natural resources. Expansion, intensification and diversification of agriculture, harnessing water resources, development of dairy and other livestock based activities and enhancement of forest based activities are the obvious avenues to intensify natural resource management.

The endeavour of R.J.S.S. has regularly been focused in the field of creating livelihood opportunities for the people of the area with the help of different grant projects and with the support of the Government programs. Now the villagers are engaged in various income generating activities such as Dairy, Goatry, vegetable cultivation embroidery mass level of Plates of Leaves (Pattal) manufacturing.

### Plates of Leaves (Pattal) Nirman:-



The lack of income opportunities compels many poor people to migrate for low-wage jobs and to lead undignified lives.

The limited scope for livelihoods enhancement because of lack of opportunities is the core problem to be addressed in these States to combat poverty. The lack of livelihoods opportunity emanates from various factors like lack of skill and asset base, infrastructure facilities etc. because of geographic disadvantages and historical neglect. In order to mitigate these intrinsic disadvantages it is important that livelihoods-focus programmes take up approaches, designed to counter the inherent weaknesses of the situation.

The delicate socio-economic condition and historically grave poverty situation caused the poor people to have lower capacity to bear risk, lesser skill, and marginal asset base.

The modern leaf plate making business become boon for the poor people of the area. The business is somehow created hope for some people of the villages to earn their livelihood apart from their regular seasonal agriculture income. The raw material is easily available in the forest area and the skill required to operate the machine is also quite easy. The market of the product is abundant and easily available. As of now the plates are sold in local and nearby market only.

The organisation is providing regular training to the unemployed young in different area of the district. More importantly the disable are also associated in this business ,there are twelve normal mental ill are engaged in manufacturing of pattal plate.

## ❶ WOMEN EMPOWERMENT ❷



Women are the most vulnerable section of the society in modern world .Promoting gender equity is a critical part in men dominated society. Women are the worst affected from urbanization and industrialization because of their isolation from the mainstream society. The primitive tribes, though a very small percentage of the population, are among the worst sufferer of the development. Isolation from the society , food scarcity, economic poverty and

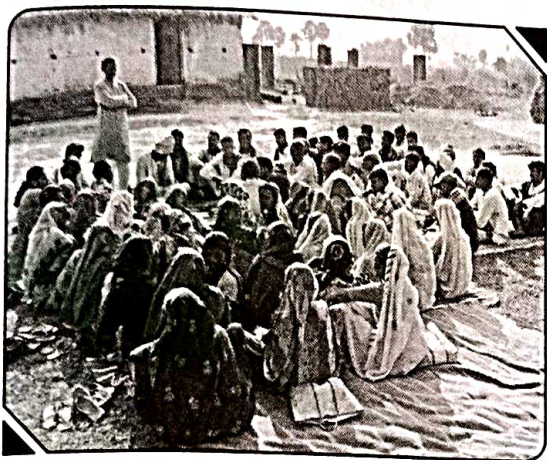
lack of basic services affect women most severely. They are saddled with the additional burden of supplementing family incomes and looking after the household as men migrate in search of work.

The organisation is committed and actively working on progress of gender equality and empowerment of women.

R.J.S.S. launched several programs with the help of the government and with their own resources to over come women from their worst situation. It has worked for providing social status, economic improvement to the women for the removal of poverty , sex discrimination. The organization's

approach to provide better platform to economic independency helped them to create internal resilience against unusual circumstances caused by the society.

### S.H.G.:



Women encounter severe difficulties in securing credit for productive purposes like in building community assets, and accessing technical knowledge in different areas like agriculture, livestock rearing, forestry, water management etc. Women don't get relevant information or new knowledge and skills. In this context formation of SHGs offer lots of potential for encouraging effective

participation of women in their own development.

Now women have been organizing themselves into Self Help Groups with the aid and support of the RJSS. The SHGs in the area coming together on a self selection basis for sharing their common concerns, pool their own resources (both financial and non-financial) and work together for their personal, social, economic and political development. The SHGs members have become a reliable source for savings & credit for their families and thereby have established say in their families financial decisions. There are some other determinants of empowerment like education and its quality where women in our area lag.

To improve the socio economic status of the women, R.J.S.S. has been actively involved on S.H.G. Bank linkage and promoting internal lending within the group. The SHGs have now empowered and got freedom from the clutches of money lenders. The women of the groups have crossed a milestone and mark their participation in Aam Sabha and Gram Sabha and also put their standing in government sponsored schemes like for demanding NREGA work and entitlement of Indira Awas Yojna, old age pension schemes and for other social welfare schemes of the government.

The organization has promoted 188 S.H.G. till the date. 47 groups has been linked to various income generation activities like Dairy, Vegetable cultivation, Agriculture goatry etc. The livelihood activities have raised their income level and helped to improve their social and economic status in the



society. In the coming year the organization has planned to link at list 88 groups with institutions like R.M.K. R.G.V.N., NABARD, to raise the socio economic status. The groups have their on saving of Rs.13,62,280/- Out of which Rs. 9,75,680 have been circulated as internal loan and Rs. 4,75,000 has been returned . As of now 49 groups have been linked with S.G.S.Y. schemes

### Leadership Training

The organization's vision is to create leaders in the society so that the new leaders can lead the society. Eight selected villagers have been given leadership and skill Jevolpment training. The trained youth have started organizing the Self help groups meeting , awareing the villagers on different issues so that villagers can take their own livelihood initiative and to solve their problems by themselves and can fight against atrocities , exploitation . The small initiative beard a good result and eight group started their own venture of tailoring, embroidery etc.

### Women's Day

The world ceiebrates 8<sup>th</sup> March of every year as women's day. On this

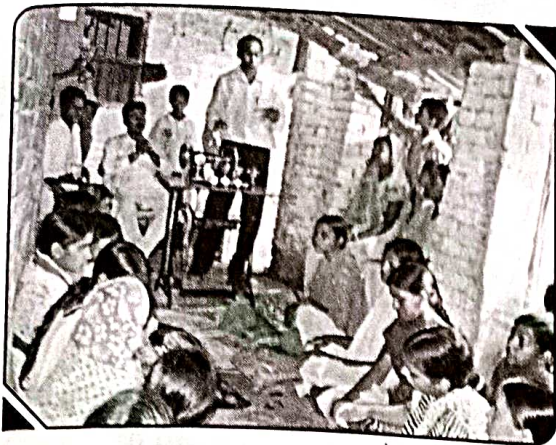


occasion the organization also celebrates this remarkable day .The organization organizes different programs on the occasion so that a mass awareness on women's right can be created. The women on this occasion are been awarded through medals for their best practices , income generating activities, for creating some exemplary work for the society. The organization also organized Dharnas, Rallies, Street

Play at Block level & State level for bringing the women at a common platform and fight for their right and entitlement.

### Vocational Training

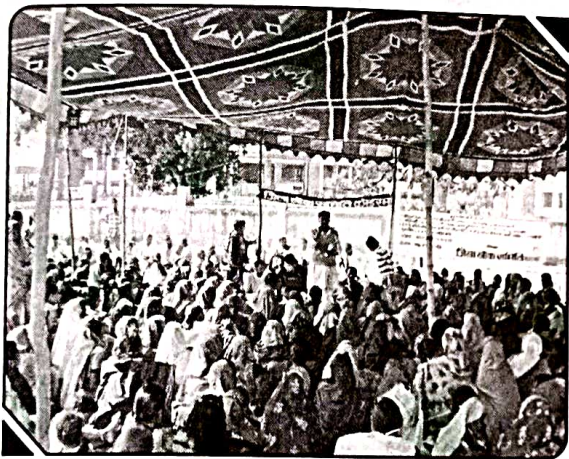
The education to the girl and women have changed their life style, way of thinking, their status in the family and helped the budding children to grow in an educated environment. The vocational training to the women and girls have empowered them and made economically independent and even helped their male counterparts to smoothly run the family without any financial burden. The organization will always be accredited for the kind and longest ever support of Mr. Md. Mahboob Alam an individual donor for vocational



by opening their own venture

training since last five years . The training especially includes skill of embroidery work and sewing clothes for poor girl and women of koderma district. He also provided sewing machine and trainer's honorarium for the project. As of now 180 women and girls have been trained into this trade and 40 women and girls are independently earning their livelihood

## ❶ ADVOCACY AND LOBBYING ❷



Advocacy represents the strategies devised, actions taken and solutions proposed to influence decision-making at the local & state level to create positive change for people and their environment.

Lobbying is "Conducting activities aimed at influencing public officials and especially members of a legislative body on legislation; to

promote or secure the passage of legislation by influencing public officials; to attempt to influence or sway a public official toward a desired action."

The organization is actively involved in lobbying , advocacy and policy level advocacy on different issues . The organization is involved in policy level advocacy for the rights and entitlements of disabled through its Jumao Manch network . The Lok Samiti in itself a complete voice of the people under which lobbying and advocacy for the people are regularly performed on different issues.

### Lok Samiti:-

Lok Samiti is a network of different NGOs in different part of the state which fight against corruption , discrimination , callousness prevailed in the society and for the rights of the people. It has taken up some urgent issues of

the region such as poverty ,implementation of government schemes & programs ,right to information act, prohibition of dowry & elimination of female & foeticide etc. The effort is to bring equitable development in the society. RJSS is one of the active partner of the samiti.

### Agriculture Training :- vermi Compost

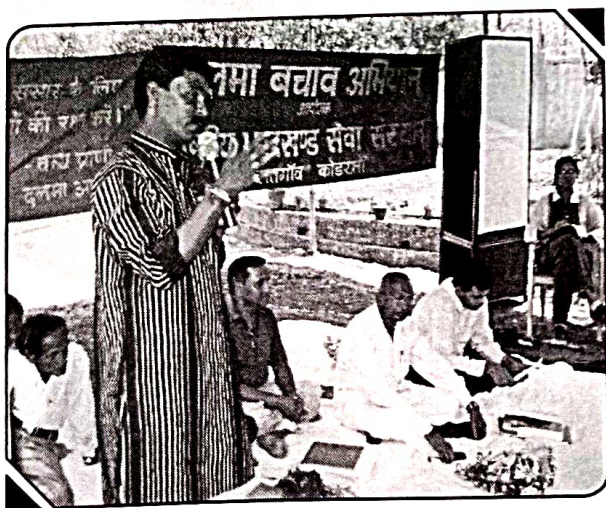
R.J.S.S. is involved in providing training to the farmers for promoting organic farming for the last few years. Organic manure is widely acceptable and demanding product as the ill effect of pesticide is been known to the society. The harmful effects of the pesticide have encouraged people to adopt organic manure.

The farmers are getting benefits in our area from the production of vermin compost. The farmers sale it in the nearby villages and uses it in their farm also.

## ENVIRONMENT

The Global warming , climate change and rising of temperature is an world agenda where the intellectuals have long discussion . All the anomalies are only due to our disruption in the system of the nature. If the masses can be aware on the issue then a change can be visible which can save the world from its ill effect. The organisation has also put a little effort in this regard. More than 2,000 mango plant have been planted in waste land of the village Gajhar to stop soil erosion with the support of district agricultural office .

### Formation of Gram Van Suraksha Samiti



The organization has formed "Gram Van Surksha Samiti" in 75 village of Dalma Ashrayani block of Jamshedpur district with the support of forest department. The Gram Van Surksha Samiti comprises of Secretary, President, Treasurer and members from the village . The samiti have their regular meetings and always ensure to avoid illegal forest cutting, intrusion of the hunters for wild animals or birds. The Samiti in a short time period have remarkably done well and

checked the illegal cutting of the forest and hunting of wild animals and birds. The Samiti have their commitment with the forest department that they will fight against the environment change and soil erosion problems which happens from the forest

cutting .

To aware the people on the issue, the organization organized street play in 82 villages of Dalma Ashrayani with the support of forest department. The theme of the play was to save the forest and the wild animals of the area. The play was very attractive and accepted by the society.

### Solar Lantern Distribution:



The organization distributed 971 solar lantern in satgawan block of koderma district. The project was supported by the Forest department Koderma and Jareda Jharkhand. The poor villagers are enjoying the solar light without any charges.

### Blanket Distribution

The organization distributed 200 blanket among poor villagers of Satgawan block with the help of Mr.Md.Mahboob Alam General secretary Obatelpers International(USA)and his son . Another lot of 150 blankets have been distributed by Mr.Sajid Hussain (Lallu) a renowned social activist of Koderma district.



### Foreign Delegate from UK

Foreign delegate Ms.Oote from UK visited organization at Satgawan, Koderma. She



spend several days in village to learn and observe the problems of villagers and tribals. During her visit she interacted with different community members. The organization honours her deep rooted concern for the development of villagers and her gift of Lap top to the organization .The organization will always keep her sprit towards development of the villagers and tribals.

### Id Milan Samaroh

The organization mandate to work for all the religion. The organization is always organizing such programs to generate social cohesiveness. The Id Milan Samaroh is such program which has mass acceptance and created social cohesiveness. The program was supported by the social worker Mr.Mahboob Alam -General secretary Obatelpers International(USA).

### Adopt a Village Program

Implementing "Adopt a Village Program" first time has given a sense of pleasure, satisfaction and understood the importance of adoption. The adoption of village seems somehow similar as a person adopts a child. The benefits from adopt a village program is enormous; it is more focussed due to its micro level planning for the overall development of the selected village and implementation of all the program until the village get self sustained .

### Village: Gajhad

Achivement : 35 Household

34-Ghatwa, 1-Yadav

Past History: Labourers in farm activitie,migrate to work

### Majar Achivement :

- ✿ Now started farming, Made Water Tank, Made 2 Check dam with sharam dan which is sufficient for whole year farm activity(Irrigation purpose).
- ✿ First Time wheat cultivation in life time.
- ✿ 10 acre potato cultivation
- ✿ 25 acre paddy cultivation

### Exposure to Anna Hazare

A team of 10 members have visited the Anna Hazare campus to get the exposure of his remarkable and world approved work. The team visited and observed several works of Anna Hazere to implement it in the villages . The team learned the production and selling process of dairy unit , Water shed management through construction of low cost check dam made by community contribution ,schools run by the community ,forestry hospitals ,SHG management and adopt a village management are some of the remarkable learning of the team which the organization tried to implement in the koderma district.



## GOVERNANCE

### List of Governing Bodies of Organisation

Sl. No.	Name	Education	Occupation	Post	Address
1	Ram Nandan Prasad	Matric	Social Worker	President	Vill. Sinhas. Po. Satgawan Dist. Koderma
2	Manoj Kumar	M. Sc.	Social Worker	Secretary	Vill. Sinhas. Po. Satgawan Dist. Koderma
3	Vijay Kumar	B.Com. LLB	Social Worker	Treasurer	Vill. Sinhas. Po. Sughandi Dist. Nawada
4	Lakhan Prasad	B.A.	Govt. Employee	Member	Makchund Toli Chutia, Ranchi
5	Marium maduri Munjini	B.A.	Freelancer Master Trainer of Health	Member	Pathal Kudwa Ranchi
6	Ishan Chand Mahto	M.A.	Supply Inspector Govt. Employee	Member	Makchund Toli Chutia, Ranchi
7	Akhtari Begum	M.A.	Socil Activist	Member	Chauparan

### List of Advisory Committee of Organisation

Sl. No.	Name	Designation
1	Shri Sachidanand Singh	Former Magistrate, Bihar Government
2	Shri Mahabir yadav	Former Permanent Member Railway Recruitment board, New Dehl
3	Md. Mahboob Alam	Awarded Social Worker
4.	R.K. Verma	DSC Gridih

**FORM NO. 10B**  
**[SEE RULE 17B]**

AUDIT REPORT UNDER SECTION 12A (b) OF THE INCOME- TAX ACT,  
1961, IN THE CASE OF CHARITABLE OR RELIGIOUS TRUSTS OR  
INSTITUTIONS.

We have examined the balance sheet of RASHTRIYA JHARKHAND SEVA  
SANSTHAN. VILL.-SIHAS, P.O.-SATGAWAN, DIST.-KODERMA,  
JHARKHAND as at 31.03.2008 and the income & expenditure account for the  
year ended on those dates which are in statement with the books of account  
maintained by the said trust or institution.

We have obtained all the information and explanations which to the best of  
our knowledge and belief were necessary for the purpose of the audit. In our  
opinion, proper books of account have been kept by the above named trust or  
institution so far as appears from our examination of books.

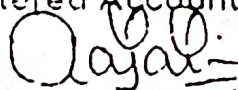
In our opinion and to the best of our information and according to information  
given to us he said accounts give a true and fair view :-

- (i) In the case of balance sheet of the state of affairs of the above named  
trust of institution as at 31.03.2008 and
- (ii) In the case of income & expenditure account, of the excess of income  
over expenditure for the accounting year ending on 31.03.2008.

The prescribed particulars are annexed hereto.

Place : Hazaribagh  
Date : 26.05.2008

For U. NARAIN & CO.  
Chartered Accountants

  
(RAJ KUMAR JAIN)  
Partner

Memo No. : 72216  
Name : Raj Kumar Jain  
Address : Sogani Sadan,  
Main Raod, Hazaribagh

**RASHTRIYA JHAKRIHAND SEVA SANSTHAN**  
**VILL.-SIHAS, P.O.-SATGAWAN**  
**DIST.-KODERMA, JHARKHAND**  
**CONSOLIDATED BALANCE SHEET AS ON 31.03.2008**

LIBILITIES	AMOUNT	ASSETS	AMOUNT
<b>CAPITAL FUND</b>		<b>FIXED ASSETS: GENERAL</b>	
Opening Balance	135370.00	Land	38270.00
<b>LOANS</b>		Building : O.B.	132795.00
From Others : O.B. 41005.00		Office Equipment : O.B.	5175.00
Addition during the year 41000.00	82005.00	Books : O.B.	4636.00
From Prakalp-total Sanitation Campaign	50000.00	Baby Balance Machine : O.B.	1000.00
		Computer : O.B.	40000.00
		Other Assets : O.B.	25156.00
<b>CURRENT LIABILITIES: SSA</b>		Shed Construction : O.B.	4939.00
Outstanding Honorarium : O.B.	388000.00	Blanket / Dari : O.B.	4939.00
Outstanding Expenses - T.S.C.	78430.00	Bicycle : O.B.	14931.00
		Motorcycle : O.B.	14931.00
		Sewing Machine : O.B. 10840.00	
		Add : purchased 3000.00	13840.00
		Furniture : O.B. 20509.00	
		Add : Purchased 2070.00	22579.00
		Patal / Plate Machine O.B.	37650.00
			398392.00
		<b>CURRENT ASSETS</b>	
		Cash Balance	19441.00
		Bank Balance	
		BOI - A/c No. SB 5470	1316.00
		BOI - A/c No. SB 6868	6520.50
		BOI - A/c No. 5548	1181.00
		BOI - A/c No. 4793	7286.00
		PNB - A/c No. 127	1079.00
		SBI - A/c No. 30307118658	230992.00
			267815.00
		<b>GENERAL FUND</b>	
		Opening Balance	147053.50
		Less : Excess of Income	
		Over Expenditure	79456.00
			67597.50
	<b>733805.00</b>		<b>733805.00</b>

Place : Hazaribagh  
Date : 26.05.2008

For **U. NARAIN & CO.**  
Chartered Accountants

*Raj*  
**(RAJ KUMAR JAIN)**  
Partner



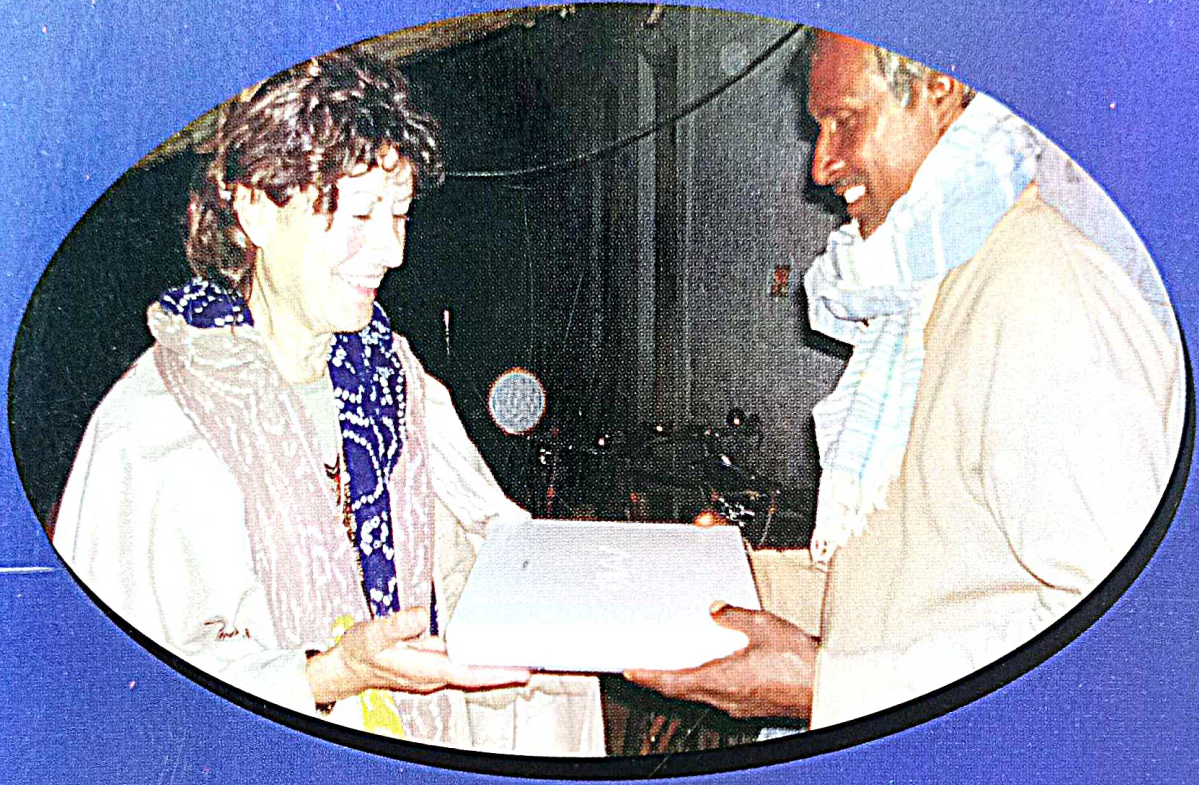
**RASHTRIYA JHAKRIHAND SEVA SANSTHAN**  
VILL.-SIIAS, P.O.-SATGAWAN  
DIST.-KODERMA, JHARKHAND

CONSOLIDATED INCOME AND EXPENDITURE ACCOUNT FOR THE YEAR ON 31.03.2008

EXPENDITURE	AMOUNT	INCOME	AMOUNT
<u>TO REVENUE EXPENDITURE</u>		<u>BY GRANT IN AID</u>	
Community Mental Health	152060.00	Community Mental Health : 134400.00	
Total Sanitation Campaign	244188.00	Add: Unspent Grant O.B.      2023.00	136423.00
Patal Plate	65923.00	Total Sanitation Campaign	316672.00
General	227646.00		
<u>TO OUTSTANDING EXPENSES</u>		<u>BY INTEREST FROM BANK</u>	
Total Sanitation Campaign	78430.00	Kishori Niketan	45.00
		Surva Shiksha Abhiyan	291.00
		Community Mental Health	291.00
		General	112.00
<u>TO EXCESS OF INCOME OVER EXPENDITURE</u>	79456.00	<u>BY OTHERS</u>	
		Donation-Community mental Health	12500.00
		Regn. Fees-Total Sanitation Campaign	12350.00
		Sale of Patal Palate-Patal Plate	60048.00
		General	
		Local Contribution	196900.00
		Membership Fees	7525.00
		Donation	72653.00
		Community Rehabilitation	31893.00
	<b>847703.00</b>		<b>847703.00</b>

PLACE : HAZARIBAGH  
DATE : 26.05.2008

For **U. NARAIN & CO.**  
Chartered Accountants  
*Royal*  
**(RAJ KUMAR JAIN)**  
Partner



## Rashtriya Jharkhand Seva Sansthan

At-Sihas (pahalwan Ashram Bhakhara)  
Post-Satgawan, Dist-Koderma (Jharkhand) Pin-805132  
Mobile-(+91) 9939298583, 9430074285, 9430122964  
E-mail: [rjss@rediffmail.com](mailto:rjss@rediffmail.com), [info@rjssjharkhand.com](mailto:info@rjssjharkhand.com)  
website : [www.rjssjharkhand.com](http://www.rjssjharkhand.com)